



**PREQUALIFICATION
DOCUMENT**
H & K GROUP

CONTENTS:

- 1. OFFICE OVERVIEW**
- 2. GENERAL INFORMATION**
- 3. ORGANIZATION STRUCTURE**
- 4. POLICIES**
- 5. H & K GROUP PROFILE**
- 6. LIST OF LATEST PROJECTS**

1. OFFICE OVERVIEW

H & K GROUP

MESSAGE FROM CHIEF EXECUTIVE OFFICER

H & K GROUP is a group composed of committed engineers with expertise and proficiency. Driven by passion, performance and innovation. We deliver the ultimate quality of engineering services to our valuable clients which includes interior design, furniture and fit out , design supervision, construction management and project management with the pursuit of excellence and growth in delivering luxury. Our Company is engaged in development and research to provide the best solutions for all our clients.

CEO

H & K GROUP

WHO WE ARE

We provide planning and design services for all types of buildings including administrative, commercial, residential, sports and also the reconstruction of existing buildings. This covers both exterior and interior, beginning with an architectural study and ending with the finished project. As chief designers we cover the total project preparation for the necessary legal procedures required for land and building approval and building inspection service. Our staff provides a broad range of professional services, with exceptional performance and extraordinary attention to detail. With a passion for excellence, expressed through design, H & K GROUP prides itself on helping clients envision projects that meet their needs and then turn that vision into reality.

OUR VISION :

Our vision is to create a non- stop solution provider for interior design, project management and renovation services.

OUR GOAL:

Our ultimate goal is to ensure the services we provide are up to the best possible standards, committed to strive their very best to meet, and to always exceed client expectations by actively communicating their thoughts and ideas.

2. GENERAL INFORMATION

H & K GROUP

GENERAL INFORMATION ABOUT THE OFFICE	
COMPANY NAME	شركة اتش اند كا جروب للمقاولات
REGISTERED OFFICE	
ADDRESS	الرياض
Point of contact	
Name	ENG. DIALA KASSAB
Telephone	+966-555719558
Name	ENG. ESSAM HAMMAD
Telephone	+966-503210262
E-mail	hkgroup1502@gmail.com
Commercial document	
Commercial register	1010687886
Nature of Company	محدودة أجنبية
Date of formation	1442-07-4 هـ
Zakat VAT register	310871763900003
Saudization	GREEN
Brief:	We are licensed to carry out the following services as stated on our trade license, General constructions for government buildings, preparation of sites for excavation and leveling, installation of lighting systems, finishing of buildings, installation of internal ceilings and barriers and cladding of walls with wood, decoration works and installations, and furniture installation.

3. ORGANIZATION STRUCTURE

H & K GROUP

BOARD OF DIRECTORS

Well-seasoned, highly experienced and most respected professionals in each of their respective craft. They oversee the activities of the company. They are our company's decision-making body, which is in charge of all affairs as well as the representation of the company to potential clients and business partners.

ENG. ESSAM HAMMAD

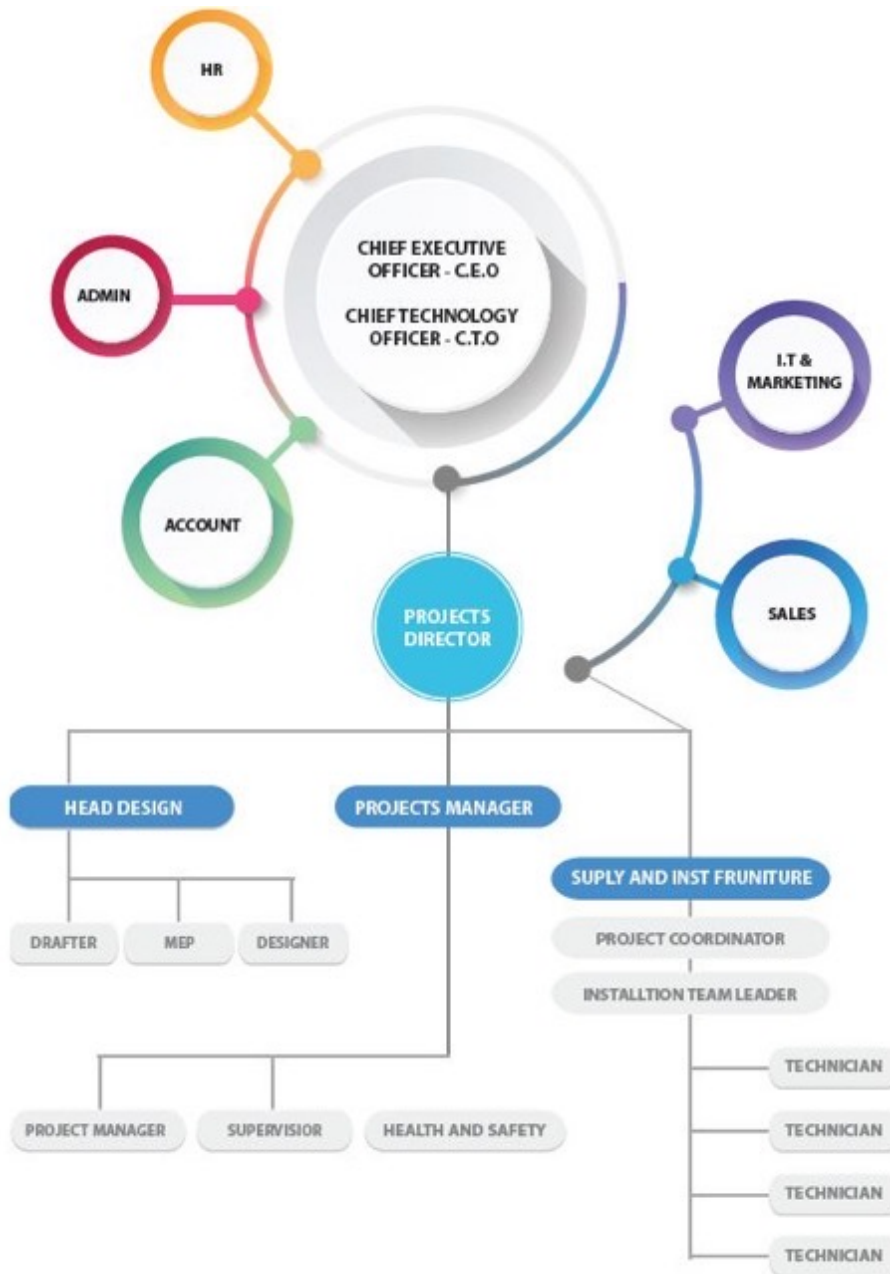
A well-seasoned and result oriented leader with tenacious commitment to drive the organization to where it is now and for future implementations. he started his career in Saudi Arabia in which he held different positions ranging from Project Engineer, Project Manager to head of furniture specialist of projects worth more than Twenty-Five (25) Billion Saudi Riyals, followed by being a partner of an international engineering company in Riyadh

ENG. DIALA KASSAB

Architect and Interior Designer with extensive experience in the design, coordination and technical management of sever all projects in Middle East, in the Arab Gulf region. She plays an important role in advising our design team to attain the aspired technical quality and to achieve the client's design intent and through active and practical approach, she leads departments to attain the company's strategic goals established in the company's strategic plan.

H & K GROUP

ORGANIZATION CHART



4. POLICIES

H & K GROUP

QUALITY POLICY

H & K GROUP Statement

H & K GROUP is specialized in Design, Construction, Supervision Management, Furniture and Fit out.

We are committed to continually improving our professional services to meet and exceed the needs of our clients.

Our primary commitment to our clients is to meet the objectives and requirements of the customer specifications as defined in the client contracts.

The Directors of H & K GROUP are passionate about delivering a Quality Building Services that meets Clients' requirements in conformance with the regulatory and legal framework to ISO 9001:2015. The Principal Quality Objective of H & K GROUP is to add value to Client Organizations.

The Management of H & K GROUP is committed to continual improvement of the quality management system and any associated activities.

H & K GROUP endeavors to deliver projects on time, to Client budget whilst communicating financial options and changes to budgets. H & K GROUP endeavors to be open, honest, consistent, approachable, contactable, personal, attentive and to provide an immediate response.

The Quality system and Client satisfaction is reviewed each month by the Directors with Continual Improvement targets set and monitored.

Signed by the management of H & K GROUP on FEB. 2021.



H & K GROUP

HEALTH AND SAFETY POLICY

H & K GROUP Statement

Employees are the most important asset and their safety is our greatest responsibility. It is the policy of H & K GROUP to provide the maximum support to promote a safe working environment by

eliminating unsafe acts and conditions and to provide appropriate personal protective equipment and safety devices where hazards cannot be eliminated. Further, it is our goal to create a safety culture among employees and environment which fosters an understanding that he or she has the ultimate responsibility to work safely.

It is the joint intent of the operating groups to:

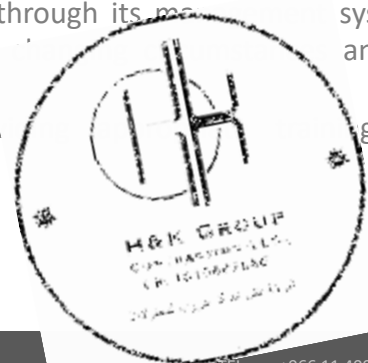
- Work at Customers premises to attend meetings and to carry out surveys and audits.
- Visit construction sites to review contractor's progress.
- Comply with and help formulate all Health & Safety legislation, codes of practice, regulatory controls and client requirements.
- Investigate and learn from all accidents and near misses, sharing best practices and efficiency improvements between divisions.
- Monitor performance and report progress, committing for continual improvement and preventing injury safety accidents.
- Drive a culture of ownership, participation and excellence.
- Ensure all Employees are competent to do their tasks, and to give them adequate training.
- Prevent accidents and cases of work-related ill health.

H &K is committed to providing a safe and healthy working environment for its employees, and, to ensure that safety procedures are in place for staff to follow whilst travelling and attending other locations.

This policy is being implemented at each H & K facility through its management systems. Changes to this policy shall be driven by audit results and the commitment to continual improvement.

Staff awareness of this policy is ensured by providing training and communications.

Signed by the management of H & K GROUP on FEB. 2021.



H & K GROUP

ENVIRONMENTAL POLICY

H & K GROUP Statement

H & K group adheres on the maximum importance of environmental issues and seeks to improve environmental performance. We aim to meet and where possible exceed the requirements of relevant environmental legislation and codes of practice. We will try to reduce pollution, emissions and waste. It is our aim to reduce the consumption of primary raw materials and improve energy and resource efficiency. We will work closely with clients, consultants and suppliers to encourage and promote environmental issues. We will continuously seek to improve environmental performance through regular review of our policy and its impact on the environment. This will be monitored on a regular, annual basis during management and staff meetings.

H & K Environmental Policy:

- We recognize that our operations have an effect on the local, regional and global environment. We will ensure that all staff are trained in our environmental management policy and given guidance in its implementation.
- As a consequence of this, the management is committed to continuous improvements in environmental performance and the prevention of pollution. The company is responsible for the implementation and monitoring of this environmental policy.
- Current environmental regulations, laws and codes of practice will be regarded as setting the minimum standards of environmental performance.
- We will implement measures to help the business and its employees to use 'green transport', for example, providing facilities for cyclists, encouraging car sharing, and encouraging the use of public transport by providing information on local routes.
- The Company seeks to encourage staff to reduce fuel consumption and lower exhaust emissions. This is a main consideration in purchasing company cars.
- We will dispose of all waste in a responsible manner, ensuring that we always comply with the Duty of Care Regulations. Any services used for the storage or disposal of waste will be checked to ensure that appropriate licenses are held.
- Our policy is to promote recycling and the use of recycled materials whilst reducing consumption of materials. Our aim is to reduce our impact on the environment through conservation, efficient use and careful planning of resources and activities.

H & K GROUP

ENVIRONMENTAL POLICY

- In the office environment, paper will be used sensibly, with measures to re-use and recycle waste paper, and the increased use of electronic communication to reduce the need for paper use.
- We will ensure that dust, noise and odor do not cause a nuisance to the community surrounding the place of business or site on which we are working.
- We will ensure that no polluting matter enters surface waters or groundwater and before commencing any works we will check the area for endangered species, protected plant species, trees subject to a Tree Preservation Order, and protected archaeology.
- We will try to reduce the energy and water consumption of the business and minimize CO2 emissions. We will invest in the improved energy efficiency of products we use and investigate environmentally safe and sustainable energy sources.
- H & K GROUP adheres to the rules and regulations set by the Kingdom of Saudi Arabia. As leading company, we aim to develop and maintain a high level of sustainability awareness, whilst continuing to improve performance. We recognize the importance of our contribution to economic growth, environmental protection and improved quality of life through the design and specification of sustainable materials and methods. Equally, we recognize the need to enhance and protect the environment, whilst using resources in a way which will not be detrimental to future generations.
- We will try to use sub-contractors and suppliers who comply with the requirements of our environmental management policy, and will help subcontractors and suppliers to comply with environmental laws and regulations as much as possible.
- The company is well aware of its responsibility for the community in sharing information regarding environmental topics or issues for public awareness and as such, we are committed in developing strategies to advertise and implement to the best of our abilities the goal of maintaining and improving the world we live in.

Signed by the management of H & K GROUP on FEB. 21



5. H & K GROUP PROFILE

H & K GROUP

PROFILE AND ACHIEVEMENTS

- ARCHITECTURAL PROJECTS
- LIST OF LATEST PROJECTS
- GOVERNMENTAL & ADMINISTRATIVE PROJECTS
- HEALTHCARE PROJECTS
- EDUCATIONAL PROJECTS
- HOSPITALITY PROJECTS
- COMMERCIAL PROJECTS
- RESIDENTIAL PROJECTS
- ACHIEVEMENTS

H & K GROUP

PROFILE AND ACHIEVEMENTS

ARCHITECTURAL PROJECTS

As architects and designers, it is our job to create more thoughtful and dynamic spaces that nurture end-users innate curiosity and creativity We believe architectural place is the perfect breeding ground for building healthy behaviors, mostly because it is the center of end-user's activities. .

EDUCATIONAL BUILDING DESIGN

Location: Muzahamiya - Saudi Arabia

Area: 24,500 m²

DESCRIPTION

The entire building has a pedagogic function, apart from the classrooms, the model seeks to potentiate the appearance of interstitial spaces between the classrooms which expand to define spaces as the prolongation of the classrooms, places for thought, for union, for friendship. Each and every one of the courts and places between the classroom modules defines itself with an educative, sensorial and dynamic theme.



PRIVATE RESORT

Area: 5000 m2

DESCRIPTION

A vacation resort design on a rural landscape area with modern designs and several approaches of main villa and guest houses.



PRIVATE RESORT

Area: 5000 m2

DESCRIPTION

A vacation resort design on a rural landscape area with modern designs and several approaches of main villa and guest houses.



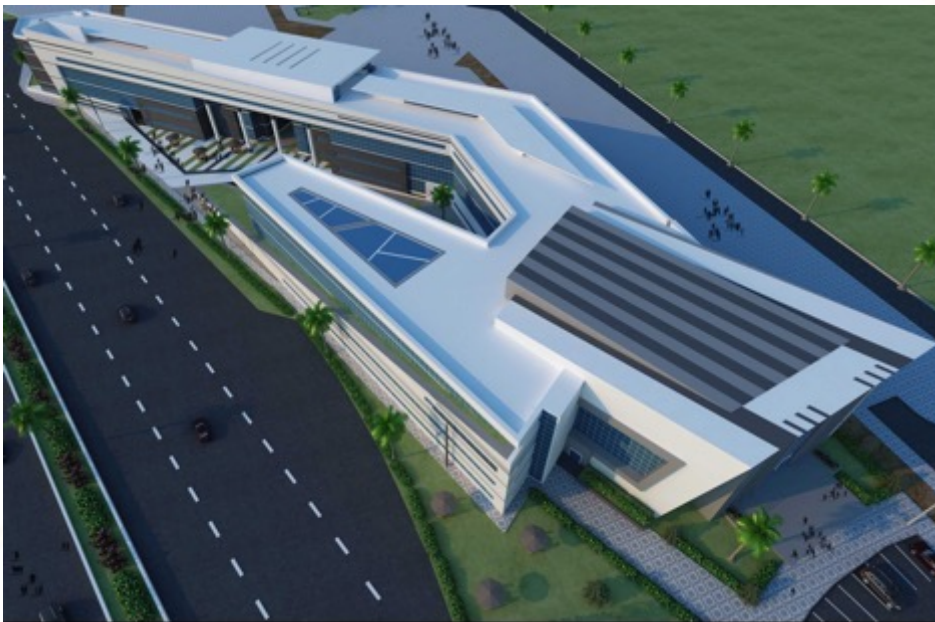
ADMINISTRATIVE COMPLEX

Location: Saudi Arabia

Area: + 20000 m²

DESCRIPTION

An administrative complex with multiple facilities including recreational, educational and administrative buildings. The master Plan is designed as a gated compound accommodating these facilities with the modernity of used materials and deconstructive design lines.



ADMINISTRATIVE COMPLEX

Location: Saudi Arabia

Area: + 20000 m²

DESCRIPTION

An administrative complex with multiple facilities including recreational, educational and administrative buildings. The master Plan is designed as a gated compound accommodating these facilities with the modernity of used materials and deconstructive design lines.



H & K GROUP

PROFILE AND ACHIEVEMENTS

LIST OF LATEST PROJECTS

MIM - (ONGOING)

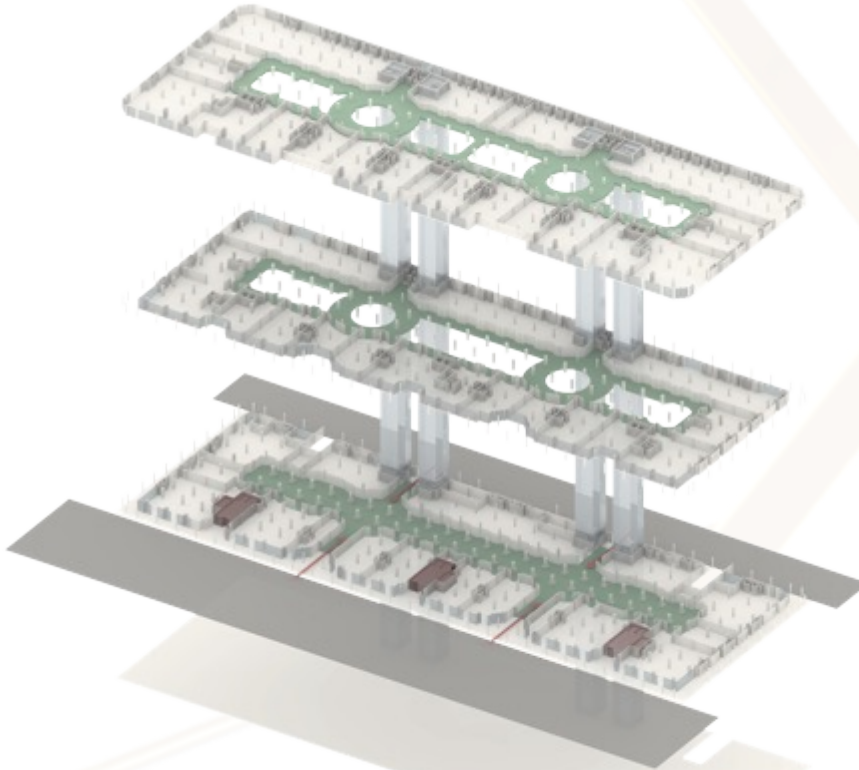
Location:- Saud Center - Al Riyadh - Saudi Arabia

Area: 2 Floors of common workspaces and 1 executive floor with minister and 3 vice ministers and their deputies

DESCRIPTION

This project is a Fit-out design and furniture supply for workspace, along with the new identity of the Ministry of Industry and as per the Vision 2030 , a new vision for the governmental working sector has emerged.

The project is not considered as only furniture supply, but each item and piece was chosen for a certain justification and is designed to be a fundamental element of the entire theme.



MIM - (ONGOING)

Location:- Saud Center - Al Riyadh - Saudi Arabia

Area: 2 Floors of common workspaces and 1 executive floor with minister and 3 vice ministers and their deputies

DESCRIPTION

This project is a Fit-out design and furniture supply for workspace, along with the new identity of the Ministry of Industry and as per the Vision 2030 , a new vision for the governmental working sector has emerged.

The project is not considered as only furniture supply, but each item and piece was chosen for a reason and is designed to be a fundamental part of the entire theme.



MIM - (ONGOING)

Location:- Saud Center - Al Riyadh - Saudi Arabia

Area: 2 Floors of common workspaces and 1 executive floor with minister and 3 vice ministers and their deputies

DESCRIPTION

This project is a Fit-out design and furniture supply for workspace, along with the new identity of the Ministry of Industry and as per the Vision 2030 , a new vision for the governmental working sector has emerged.

The project is not considered as only furniture supply, but each item and piece was chosen for a reason and is designed to be a fundamental part of the entire theme.



MOH

Location:- ITCC - Al Riyadh - Saudi Arabia

Area: MU 02 MOH headquarter Tower – Furniture Supply and Design

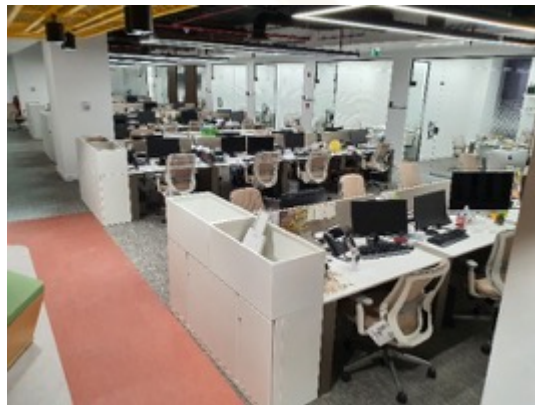
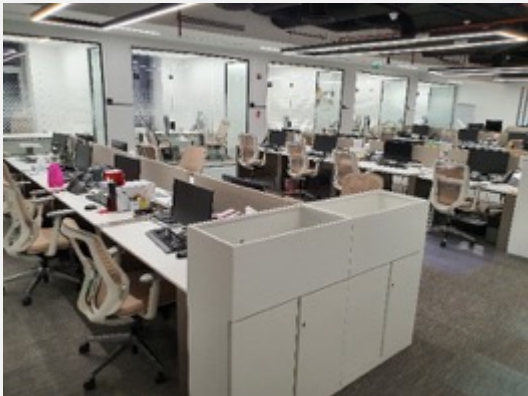
DESCRIPTION

This project is distinctive by the identity that is implemented in the whole tower through the design and scheme of the furniture starting from open workspaces and ending with The minister executive floor. The challenge was to deliver a whole identity throughout implementing new concepts in furniture selection by our professional team.



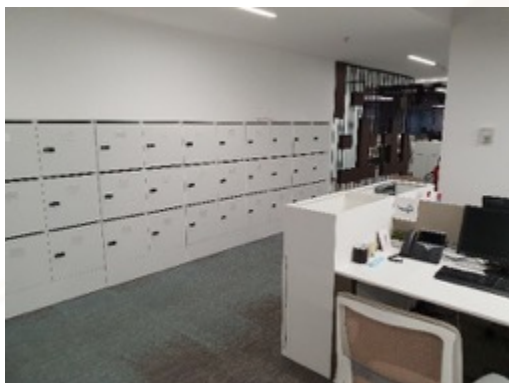
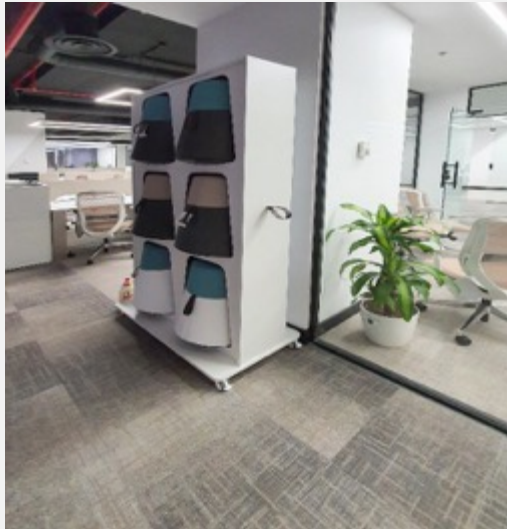
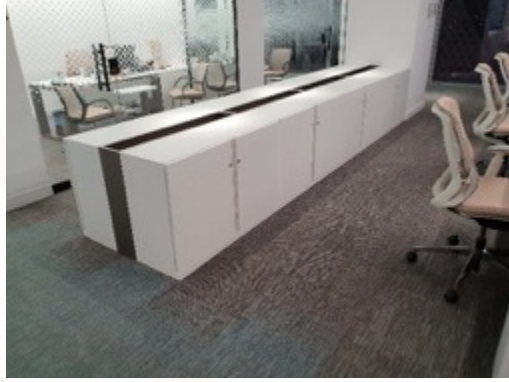
MOH

Location:- ITCC - Al Riyadh - Saudi Arabia



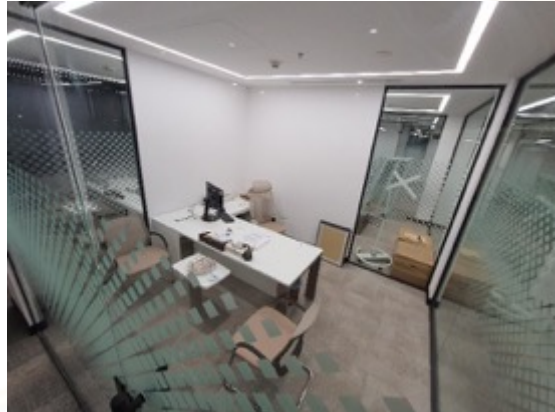
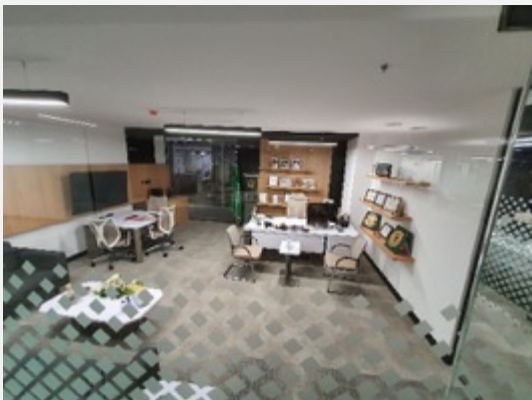
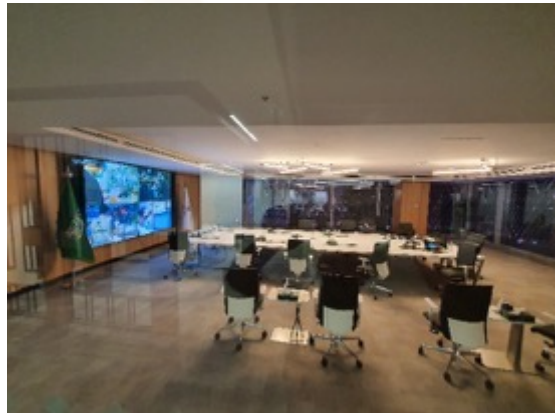
MOH

Location:- ITCC - Al Riyadh - Saudi Arabia



MOH

Location:- ITCC - Al Riyadh - Saudi Arabia



MOH

Location:- ITCC - Al Riyadh - Saudi Arabia



4th floor Creative typical plan



5th floor Active typical plan

MOH

Location:- RIYADH - Saudi Arabia



6th floor Professional typical plan



7th floor Social typical plan

MOH

Location:- RIYADH - Saudi Arabia



Executive typical plan

SBM TECHNOLOGY HUB- ITCC (ON-GOING)

Location:- Al Riyadh - Saudi Arabia

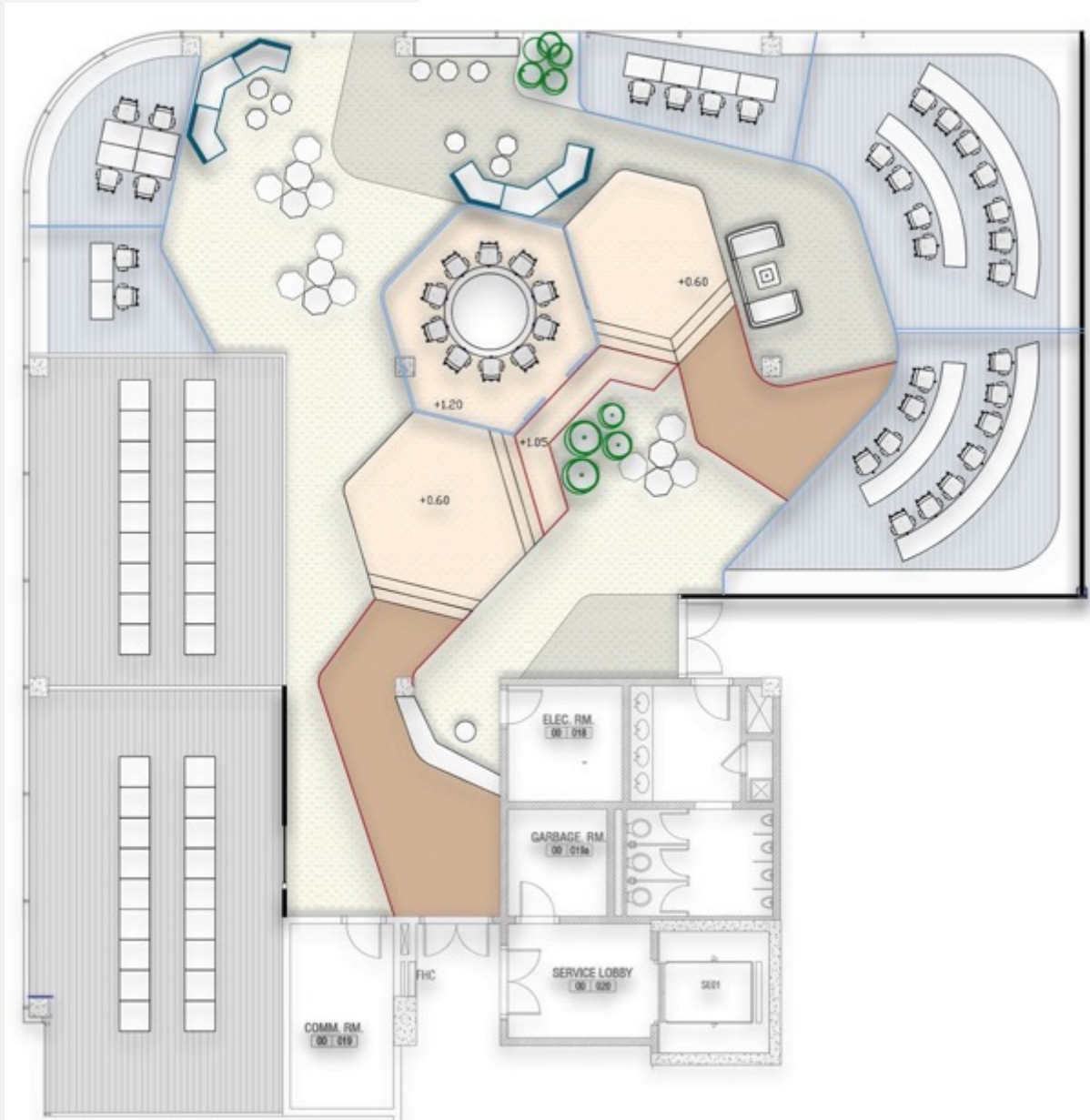
Area: 1,687 m²

DESCRIPTION

THE CONCEPT IS TO CREATE A CIRCULATION PLATFORM WITH MULTIPLE LEVELS ,OVERSEEING THE AREA AND HAVING A WIDE PANORAMIC VIEW ON THE ENTIRE ULTRAMODERN THEME OF SCREENS AND DATA CENTER



SBM TECHNOLOGY HUB- ITCC
Location:- RIYADH - Saudi Arabia



SBM TECHNOLOGY HUB- ITCC
Location:- RIYADH - Saudi Arabia



VIP Clinic

Location:- Al Riyadh - Saudi Arabia

Area: 700 m2

DESCRIPTION

RENOVATION OF VIP ROYAL CLINIC TO DELIVER A HIGH-END INTERIOR TO ACCOMPLISH GOOD DESIGN USING MEDICALLY APPROVED MATERIALS AND EXECUTION SOLUTIONS.



VIP Clinic

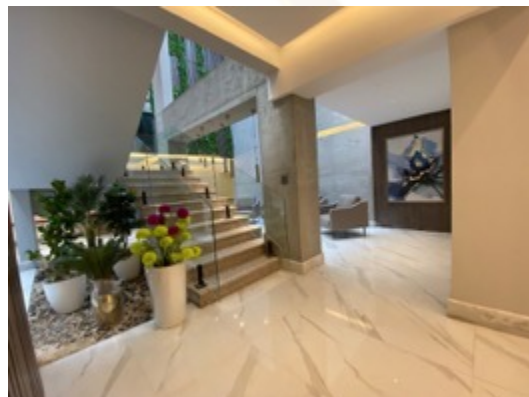
Location:- RIYADH - Saudi Arabia
Basement Floor



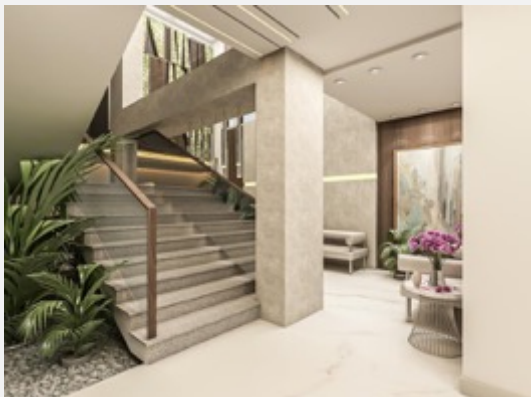
3D Perspective



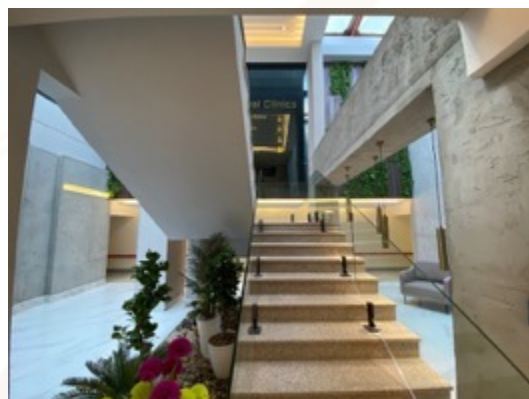
After Execution



After Execution



3D Perspective



VIP Clinic

Location:- RIYADH - Saudi Arabia



3D Perspective



Before Execution



After Execution



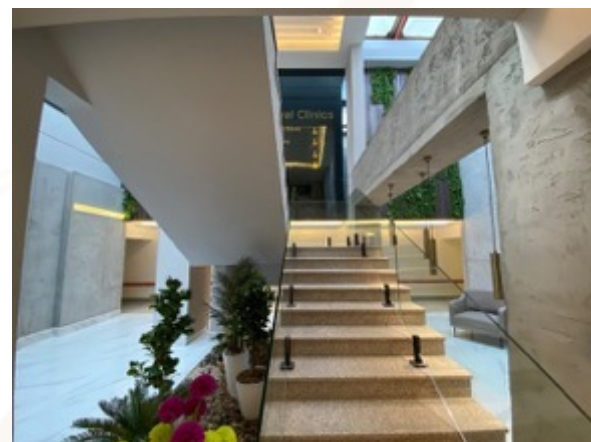
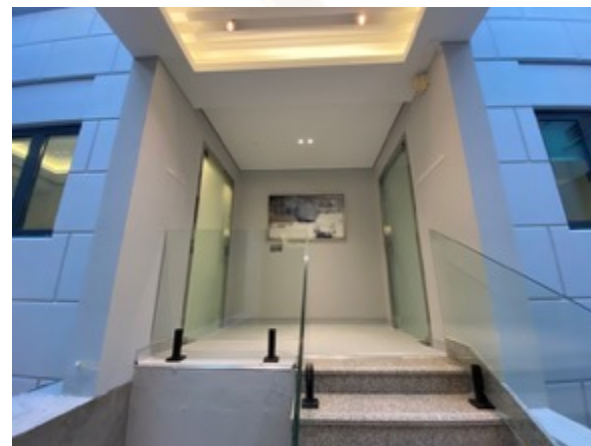
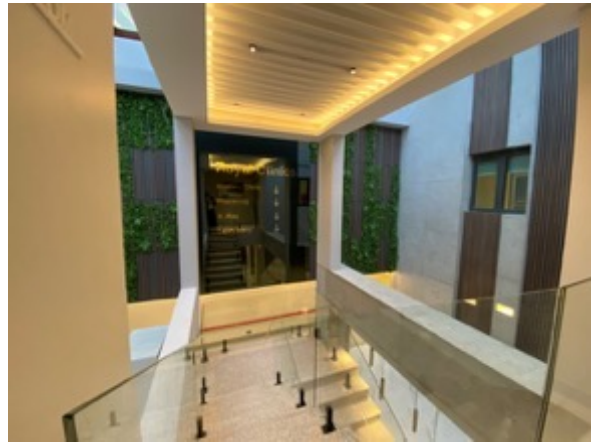
After Execution



VIP Clinic

Location:- RIYADH - Saudi Arabia

After Execution



3D Perspective



Before Execution

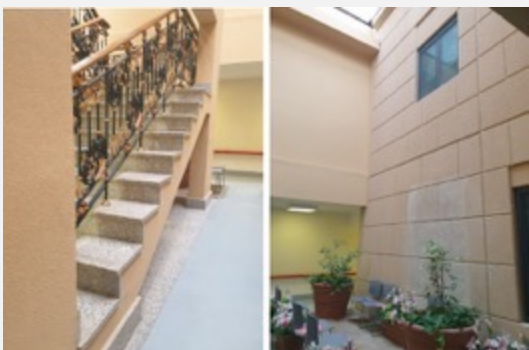
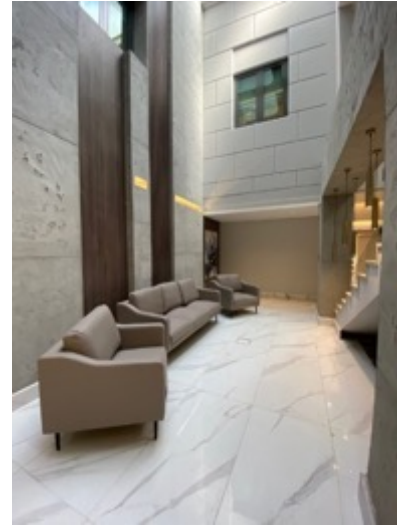
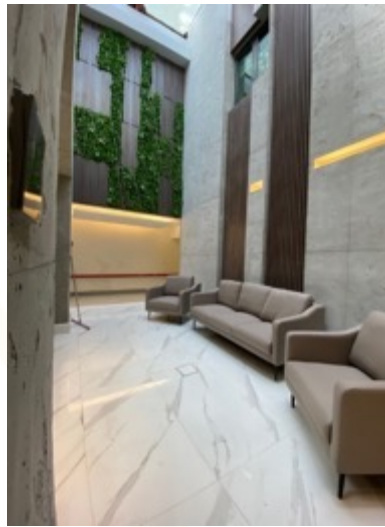
VIP Clinic

Location:- RIYADH - Saudi Arabia

After Execution



3D Perspective



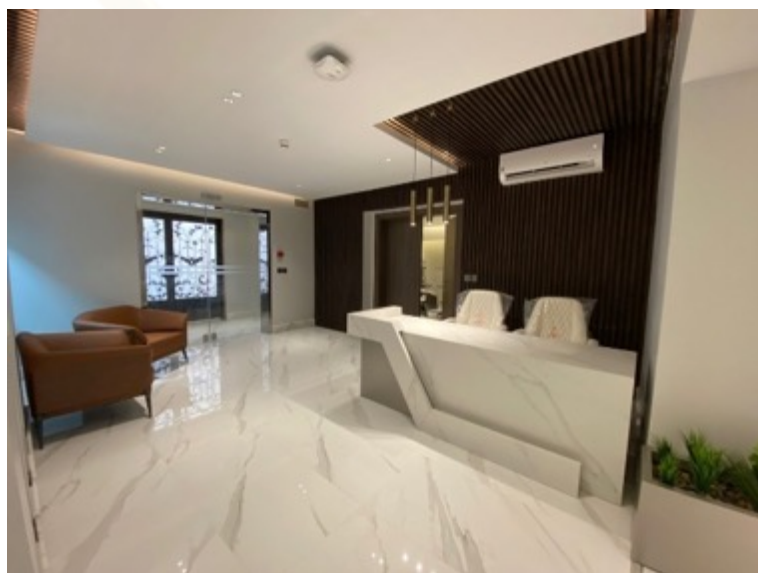
Before Execution

VIP Clinic

Location:- RIYADH - Saudi Arabia
Ground Floor



3D Perspective



Before Execution

After Execution

H & K GROUP

PROFILE AND ACHIEVEMENTS

GOVERNMENTAL AND ADMINISTRATIVE PROJECTS

Administrative spaces are the physical manifestations of economic, demographic and cultural forces. The changing nature of working places is transforming spaces into open, flexible locales where separate professions and disciplines more easily converge. The changing demographic of workers is altering designs to be more comfortable, social and collaborative with technology. For these and other reasons, spaces of innovation help elevate what matters in today's economy, making them the places to watch, and sending helpful signals to cities and suburbs aiming to become more competitive.

MINISTRY OF DEFENSE - DAWADMI 400 & 700 – DESIGN AND SUPERVISION

Location: Dawadmi - Saudi Arabia

Area: 15,334 m²

DESCRIPTION

Office spaces often give mental pressure to those who work in them by a bland and rigid atmosphere. While the existing lobbies were just passages before getting to the destination, here, people gather round to chat and have a light snack, or even hold lectures and seminars. The steps are not just a link between two spaces but a destination itself, an open cultural space for diverse functions. Such an approach was also applied to the steps and meeting rooms on each floor so that the employees could liberally communicate, debate with each other and interchange information whenever and wherever they want.



MINISTRY OF DEFENSE - DAWADMI 400 & 700 – DESIGN AND SUPERVISION

Location: Dawadmi - Saudi Arabia

Area: 15,334 m²



MINISTRY BUILDING OFFICES - MOMRA

Location: Al Riyadh - Saudi Arabia

Area: 19,296 m2

DESCRIPTION

The relaxation areas on each floor show careful consideration on the users with its sensitive design. The vivid color plan of the cafeteria catch the attention. With its consideration on details, this aims to be a unique and pleasant office that would help the employees show their creativity.



MINISTRY BUILDING OFFICES - MOMRA

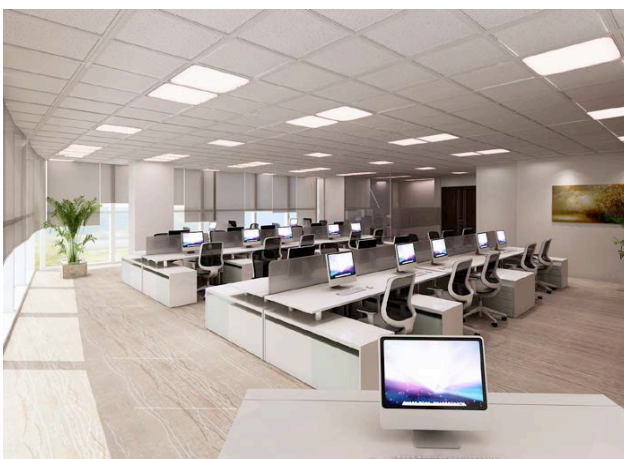
KING SAOUD BUILDING - KSU

Location: Al Riyadh - Saudi Arabia

Area: 22,000 m2

DESCRIPTION

The unity of materials used on the interior and exterior allows the ambiance outside flow into the inside, creating a more natural and comfortable atmosphere. Modern colors also elevate the spatial quality. The translucent glass used on the exterior wall could also be found on the inside; the translucent inner partition secures the privacy and the transparent glass opens up the space. Each room is furnished with various furniture, lighting fixtures and other detailed elements.



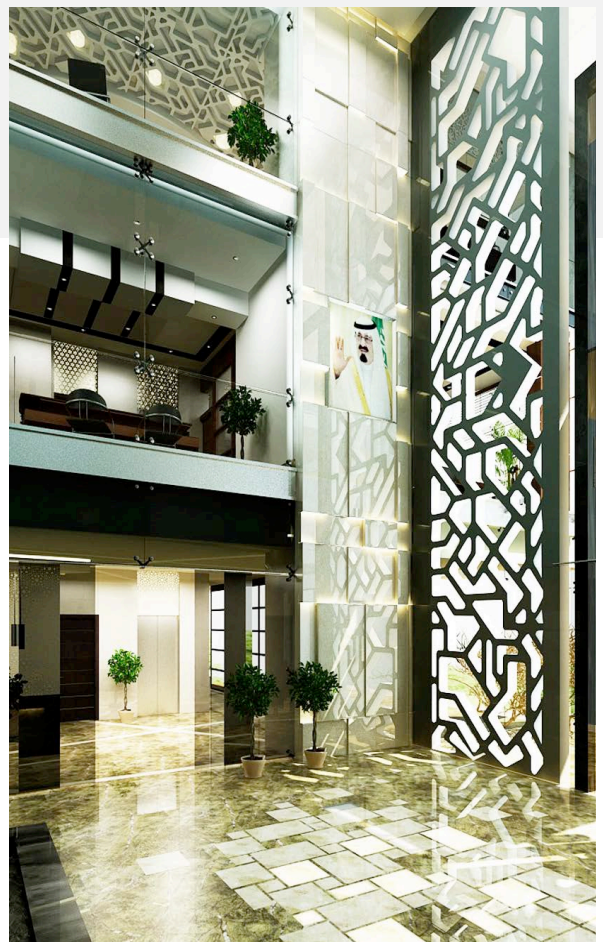
PETRO SAUDI HQ

Location: Al Riyadh - Saudi Arabia

Area: 520 m²

DESCRIPTION

The interior design focuses on providing a comfortable workspace for the employees. The daylight was drawn into the interior to make a pleasant working environment, and each floor was highlighted by different colors to increase the spatial recognition. Such a color plan was also applied on furniture to strike a balance and produce a visual pleasure.



KING FAISAL OFFICES

Location: Al Riyadh - Saudi Arabia

Area: 460 m2

DESCRIPTION

The new office design proposes a sensuous space to stimulate the creative ideas and infinite imagination of its employees. The meeting rooms uniquely provide a separate zone for quick decision making, and has been designed in various manners to allow people to sit comfortably and have a conversation.



H & K GROUP

PROFILE AND ACHIEVEMENTS

HEALTHCARE PROJECTS

Sustainability must be a consideration for the design of all health care facilities. Many sustainable design features can be incorporated into health care facility design, including day lighting, energy and water conservation, nontoxic materials and finishes, and sustainable operations and maintenance. Flexibility must be a basic feature of any new health care facility to keep it from rapid obsolescence in the face of changing needs and technologies. Health care facility needs are evolving rapidly, and the direction of that evolution is difficult to forecast with any certainty. New equipment technologies, new treatment methodologies, changes in diseases, and changes in the patient population base all impact the facilities that house them. Inpatient care is steadily being reduced while outpatient services are growing. There is increasing emphasis on special-care units and smaller satellite facilities rather than large, centralized facilities.

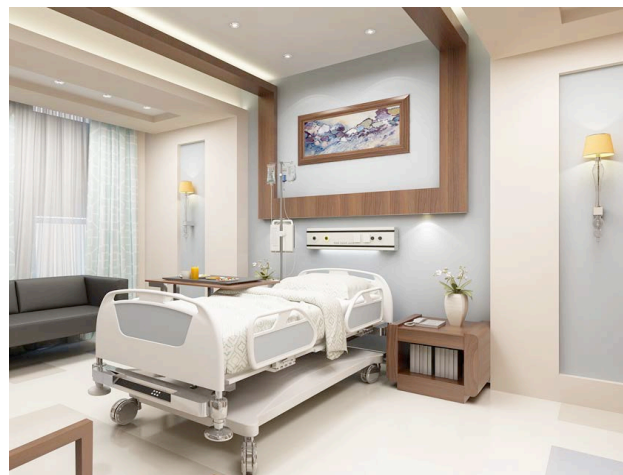
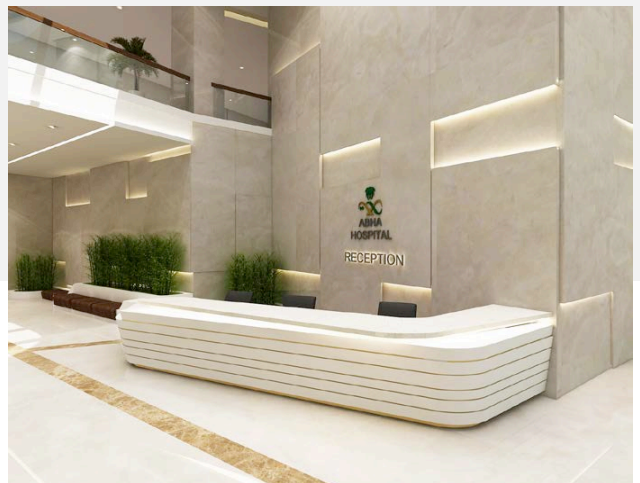
PROTOTYPE HOSPITAL 300 AND 500 BEDS

Location: Abha - Saudi Arabia

Area: 3,110 m²

DESCRIPTION

The Center for Health and Wellness boasts a new prominence along the city's central corridor and a welcoming presence for the community at large. New spaces include medical facilities, offices, and conference rooms; break rooms and other support spaces. The design is relaxed, happy, and comforting while the selected materials are durable enough to meet the maintenance needs of a health care facility.



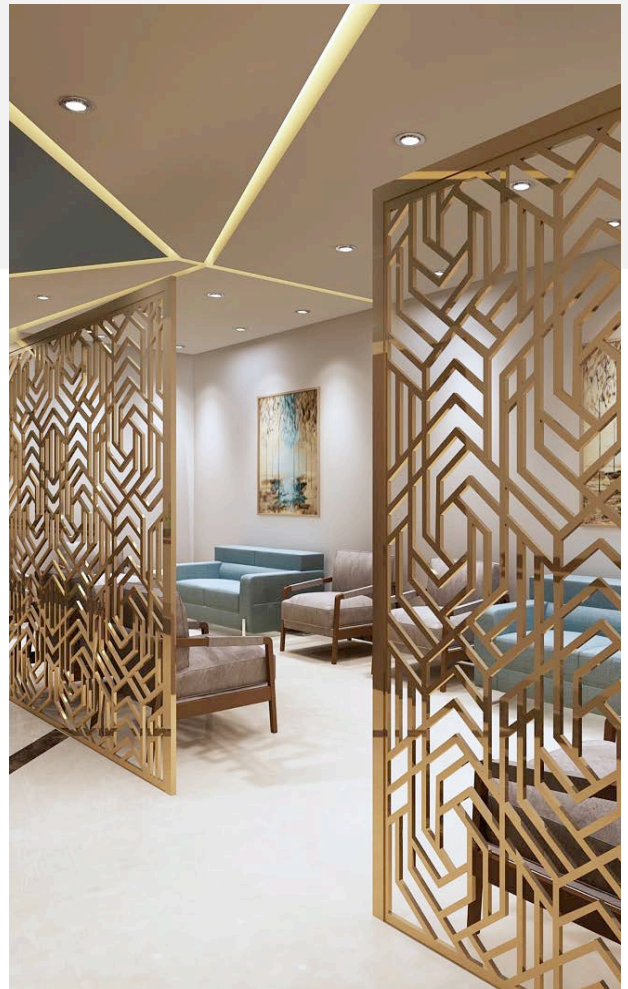
KING SAUD MEDICAL COMPLEX

Location: Al Riyadh - Saudi Arabia

Area: 734 m²

DESCRIPTION

We featured our built and imagined spaces, which aim to improve the social and economic health of our users. Achieving social mobility and class transcendence plays a role in how we, as architects, think about ourselves, especially here.



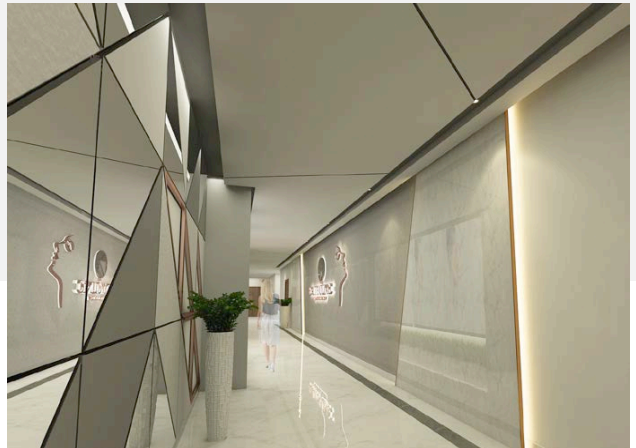
BEAUTY CLINICS

Location: Al Riyadh - Saudi Arabia

Area: 1,600 m²

DESCRIPTION

This beauty clinic is characterized by the simplicity coming from the moderated expression, is possibly the most noticeable style today. Such an approach creates a sense of openness and adds an excitement to the spatial experience. By minimizing the number of the finish material, the designer simplified the space, where facilities are centered to provide privacy to a limited number of users.



AL-SALAMAH HOSPITAL

Location: Al Riyadh - Saudi Arabia

Area: 10,235 m2

DESCRIPTION

The building is designed to improve patient and staff flow, communication, and convenience.

- Use of modular planning concepts to create truly flexible practice spaces for providers.
- Integration and use of daylight into the interior spaces by thoughtfully locating waiting areas, check-in/check-out points, and corridors with access to exterior windows
- Use of collaborative work space for providers – “on-stage” areas for focused work while providing care to patients, and “off-stage” areas for private time between patients.



H & K GROUP

PROFILE AND ACHIEVEMENTS

HOSPITALITY PROJECTS

Hospitality interior design covers a wide range of duties and tasks, from the floor plan to the color of the walls and the style of furniture. All of these aspects carefully curated and pieced together can ensure a cohesive and unique feel in the space. Decisions should go hand-in-hand with the main objectives and core values of the establishment such as; providing excellent amenities and services, going above and beyond simply providing a great night's sleep. Based on this thought process, our team might pick a bright, vibrant color pattern combined with modern furniture, innovative and more provocative decorative accents or we might select a subtle, more muted and sophisticated color palette. Those elements might be paired with plush furniture and demure wall decorations to trigger feelings of calm and comfort while still providing an upbeat and cheerful underlying design spirit.

AL-SALAMAH HOTEL

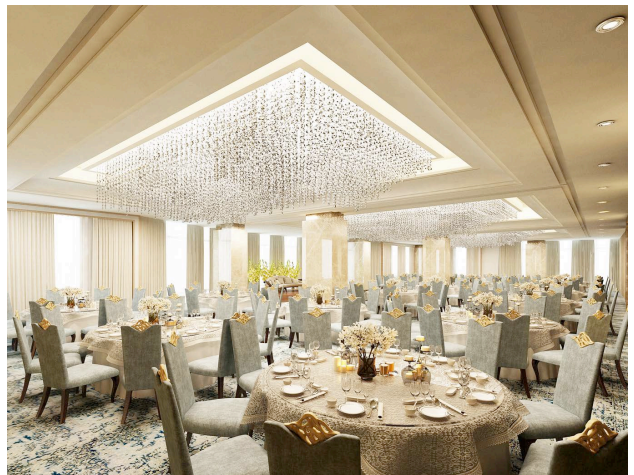
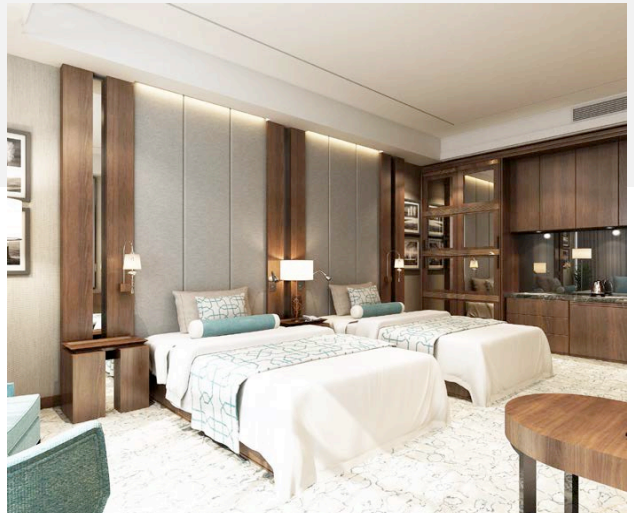
Location: Al Riyadh - Saudi Arabia

Area: 2,319 m²

DESCRIPTION

Hotels of this case emphasize protection and utilization of natural environment, beginning from the principle of creating a harmonious and beautiful residential atmosphere, deepening those beneficial environmental elements and guiding the integrated planning and design for architecture, landscape and the interior. The original unconscious spontaneously built hotel is transformed into consciously innovated residential environment beneficial to people.

The coordinated planning forms harmonious and agreeable group, more naturally expressing the internal natural pattern of the hotel area, and creating a private atmosphere differing from others.



H & K GROUP

PROFILE AND ACHIEVEMENTS

COMMERCIAL PROJECTS

Designing Commercial Interiors is the industry standard reference, now fully revised and expanded to reflect the latest developments in commercial interior design. H & K guides you through the entire design process, from planning to execution, to inform you of the vital considerations that will make your project a success.

Commercial interior design entails a much more complex set of design factors than residential design, and many of these considerations are matters of safety, law, coverage of accessibility, security and codes.

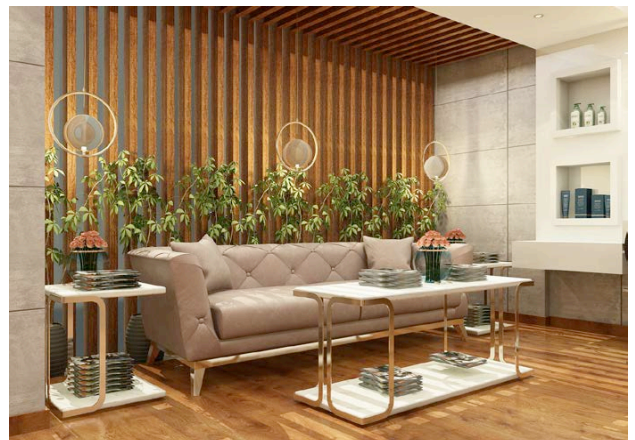
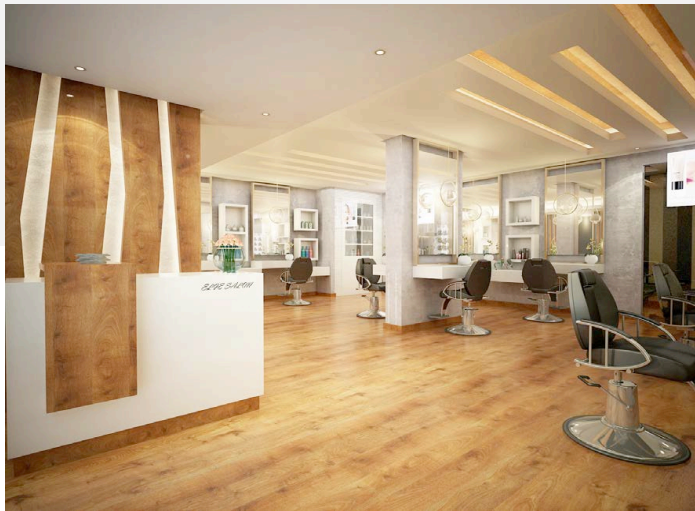
SALON

Location: Al Riyadh - Saudi Arabia

Area: 500 m2

DESCRIPTION

A hair salon has a complex circulation pattern owing to the different actions that take place simultaneously. Thus organizing the circulation flow should come first above all else in order to provide convenience to both customers and employees. The harmonious space is a result of a multi-faceted approach based on the research on the areas with complex circulation. The project consists of two levels; the areas for hairstyling and shampooing are located on the spacious basement floor, and those for makeup, and other additional zones on the first floor.



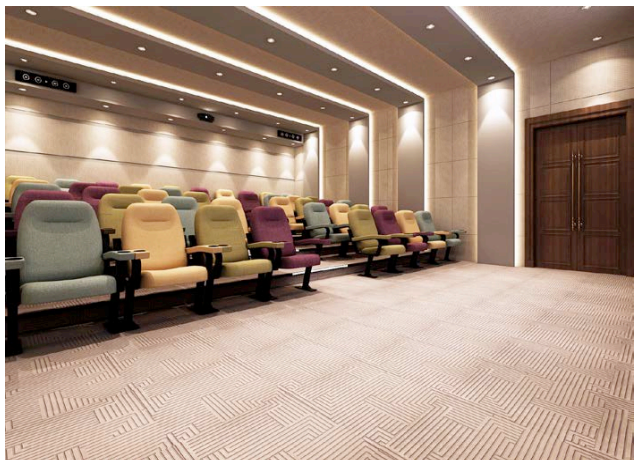
CINEMA

Location: Al Riyadh - Saudi Arabia

Area: 2,200 m²

DESCRIPTION

Walls, furniture and floors were designed to optimize the cinematic experience while maintaining a unique character. We also salvaged scraps of fabric from the original wall coverings and carpets to recreate the theater's rich color palette. The theatre may also function as modern broadcast studios. The foyer has a small seating area with cafe bar serving light refreshments. Designers decided to create envelopes housing different functions which include a hall, a cinema and a VIP lounge. A monolithic body with a seemingly smooth and reflective surface forms the skin of the movie theater communicating the special character of its interior to visitors.



H & K GROUP

PROFILE AND ACHIEVEMENTS

RESIDENTIAL PROJECTS

As architects and designers, we have an important job, building structures that will fulfill people's needs while being structurally safe and sound. But here's the thing; you can create the greatest building in the world but nobody's going to use it if the inside is a mess. Interior design is an integral part of architecture, focused on creating interior spaces that make the building both functional and aesthetically appealing. Still, we have different kinds of buildings, so it makes sense that we have different kinds of interior designs. One of the biggest arenas for designers is residential design, or the interiors of spaces in which people live. This can include houses, apartments, condos, and anywhere else where people reside. The architect may build the house, but it's the designer's job to make it a home.

PRIVATE VILLA

Location: Al Riyadh - Saudi Arabia

Area: 1,800 m²

DESCRIPTION

Varied and flexible villa type. Taking the features of traditional villa and house and combining the demands of contemporary elites toward modern life, it offers different villa types and house types for different classes.



PRIVATE VILLA

Location: Al Riyadh - Saudi Arabia

Area: 1,566 m²

DESCRIPTION

Architects optimize the general layout and construct high-end space, adopting the detailed design methods including elevating the entrance, studying on the hallway, creating micro space, echoing between exterior and interior, as well as micro topography to build high quality environmental experience.



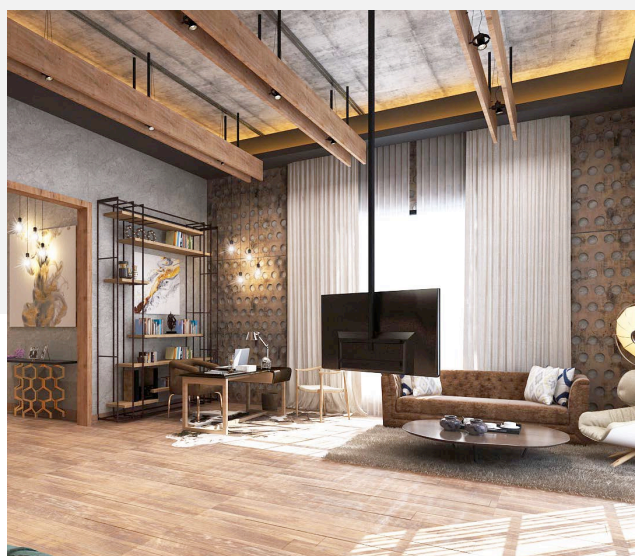
PALACE

Location:- Al Riyadh - Saudi Arabia

Area: 1,687 m²

DESCRIPTION

According to market requirements, reflecting the characteristics of the times, best meeting the needs of users, the design is pursuing the characteristics of practical, rationality, and irreplaceability within certain limits. In this way it can also be beneficial to the sites' integrated environment, service quality and social benefits.



OTHER WORK



H & K GROUP

PROFILE AND ACHIEVEMENTS

ACHIEVEMENTS

ON SITE ACHIEVED WORKS.

MOMRA

Location:- Al Riyadh - Saudi Arabia



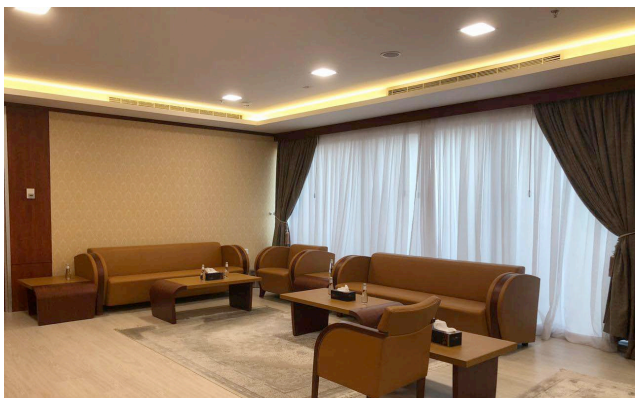
MOMRA

Location:- Al Riyadh - Saudi Arabia



MINISTER OFFICE

Location:- Al Riyadh - Saudi Arabia



BEAUTY CLINICS

Location:- Al Riyadh - Saudi Arabia



AL RAJHI INVESTMENT

Location:- Al Riyadh - Saudi Arabia



SAMI

Location:- Al Riyadh - Saudi Arabia



KFU

Location:- Dammam - Saudi Arabia



H & K GROUP

LIST OF LATEST PROJECTS

<u>PROJECT</u>	<u>LOCATION</u>	<u>CLIENT</u>	<u>SCOPE OF WORK</u>
ITCC MU 03 & MU 02 BUILDING	RIYADH	MOH	FURNITURE DESIGN
MINISTER OFFICE AND ADMIN. – OLAYA	RIYADH	MOMRA	DESIGN AND FURNITURE
MINISTER OFFICE AND ADMIN. – KSU BUILDING	RIYADH	MOMRA	DESIGN AND FURNITURE
DAWADMI 700	DAWADMI	MODA	INTERIOR DESIGN
DAWADMI 400	DAWADMI	MODA	INTERIOR DESIGN
HOTEL	RIYADH	BORDER GUARD INSTITUTE	INTERIOR DESIGN AND LANDSCAPE
HOSPITAL 200 BEDS	HAEL	MOH	INTERIOR DESIGN
HOSPITAL 500 BEDS	HAEL	MOH	INTERIOR DESIGN
MEDICAL TOWER	ABHA	MOH	INTERIOR DESIGN



H&K Group

AL-IBDAA TOWER, MEZZANINE FLOOR
KING FAHAD ROAD - RIYADH
11431-11301, KINGDOM OF SAUDI ARABIA

TEL: +966 55 5719558

EMAIL : hkgroup1502@gmail.com